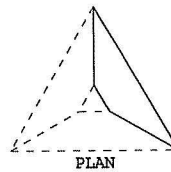
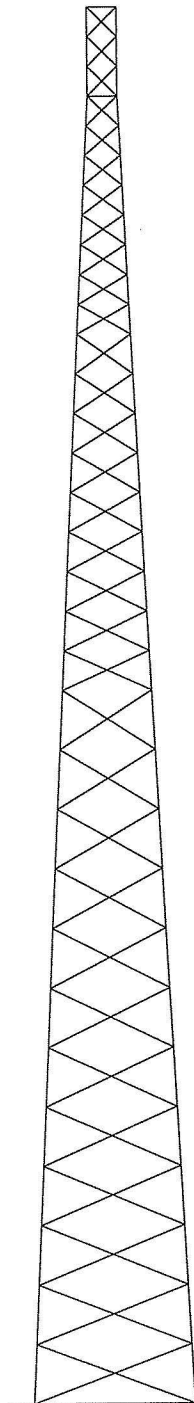


50 ksi	A	B	C	8.6250"x0.5000" PIPE		5.5625"x0.5000" PIPE		D	E	F	G
36 ksi	L 5"x5"x5/16"	H	I	J	L 3"x3"x1/4"		K	L	M	N	N
36 ksi	(2) 5/8"	(1) 3/4"		(1) 5/8"		(1) 5/8"		5.0'		5.0'	5.0'
A325X	12 @ 10.0'		9 @ 6.7'		11 @ 5.0'		11 @ 5.0'		5.0'		5.0'
Face Width	27.0'										
Panel Height # Panels											

235.0'
230.0'
220.0'
215.0'
200.0'
180.0'
160.0'
140.0'
120.0'
100.0'
80.0'
60.0'
40.0'
20.0'
0.0'



NOTES:

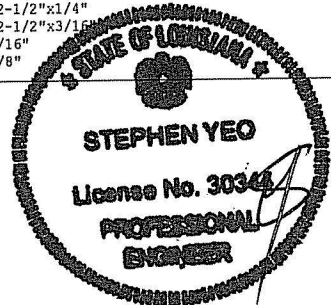
1. The tower model is S3TL Series HD1.
2. Transmission lines are to be attached to standard 12 hole single rail waveguide ladders.
3. Azimuths are relative (not based on true north).
4. Foundation loads shown are maximums.
5. (6) 1 3/4" dia. F1554 grade 105 anchor bolts per leg. Minimum 65.5" embedment from top of concrete to top of nut.
6. All unequal angles are oriented with the short leg vertical.
7. This tower was designed for Structure Class II, Exposure Category C and Topographic Category 1.
8. The foundation loads shown below are factored loads.

ANTENNA LIST

NO	ELEV	ANTENNA	TX-LINE
1	235'	(12) 7200.42 + 12' 3T-Boom(R)	(12) 1 5/8
2	225'	(12) 7200.42 + 12' 3T-Boom(R)	(12) 1 5/8
3	215'	(12) 7200.42 + 12' 3T-Boom(R)	(12) 1 5/8
4	205'	(12) 7200.42 + 12' 3T-Boom(R)	(12) 1 5/8

MATERIAL LIST

NO	TYPE
A	12.7500"x0.5000" PIPE
B	12.7500"x0.3750" PIPE
C	10.7500"x0.5000" PIPE
D	5.5625"x0.3750" PIPE
E	4.0000"x0.3180" PIPE
F	3.5000"x0.2160" PIPE
G	2.3750"x0.1540" PIPE
H	L 4"x4"x5/16"
I	L 3-1/2"x4"x5/16"
J	L 3-1/2"x4"x1/4"
K	L 2-1/2"x2-1/2"x1/4"
L	L 2-1/2"x2-1/2"x3/16"
M	L 2"x2"x3/16"
N	L 2"x2"x1/8"



MAR 16 2009

TOTAL FOUNDATION LOADS

H=132.71 k
V=142.67 k
M=15851.46 k-ft
T=-128.73 k-ft

INDIVIDUAL FOOTING LOADS

H=77.61 k
V=702.09 k
U=-627.18 k

Client:	Job No:
Location:	Total Height: 235.00' Tower Height: 235.00'
Standard: TIA 222-G-2005	Design Wind & Ice: 120mph 0" ice & 30mph 0.5" ice